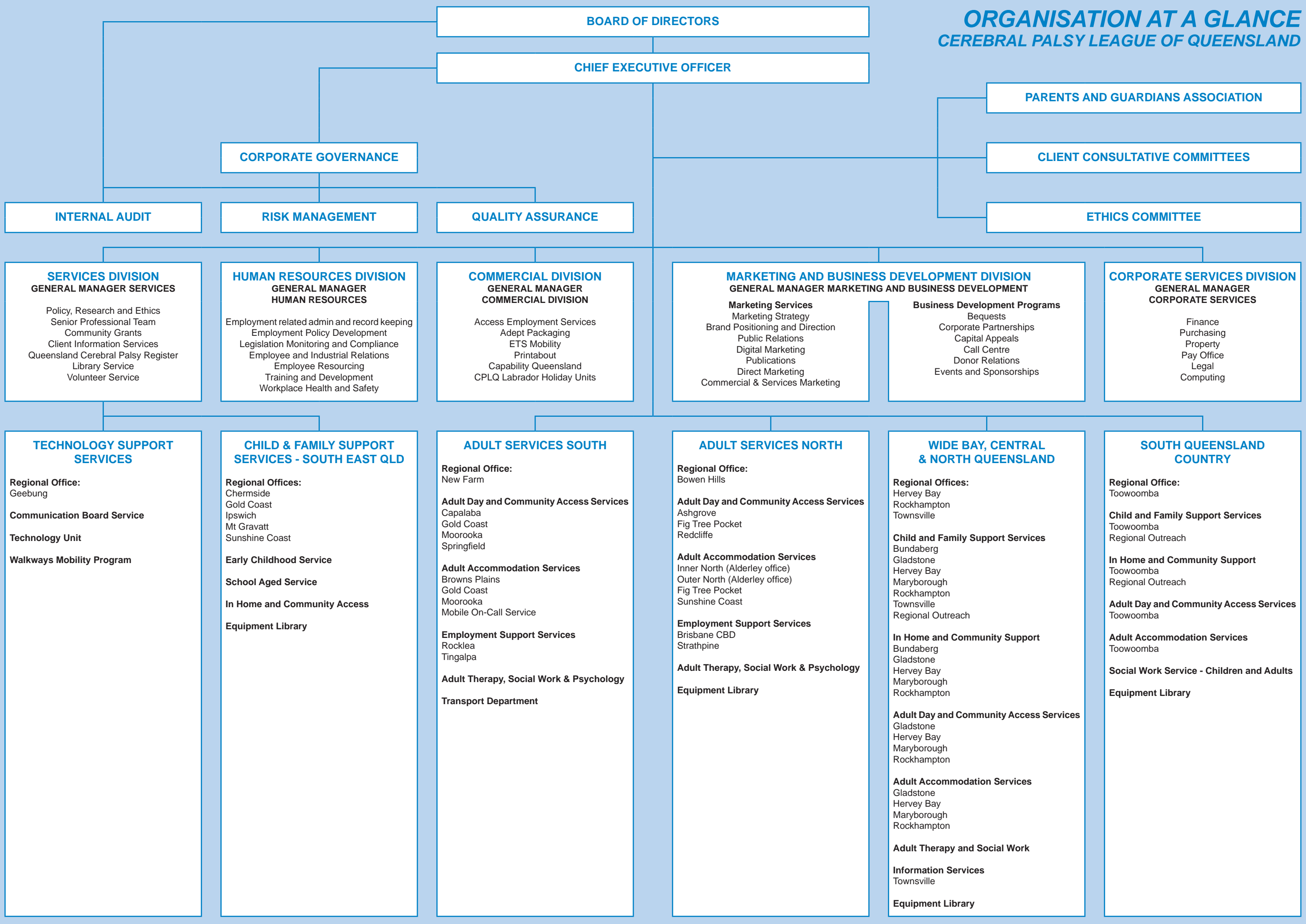


# ORGANISATION AT A GLANCE

## CEREBRAL PALSY LEAGUE OF QUEENSLAND



**BOARD OF DIRECTORS**

**CHIEF EXECUTIVE OFFICER**

**CORPORATE GOVERNANCE**

**INTERNAL AUDIT**

**RISK MANAGEMENT**

**QUALITY ASSURANCE**

**PARENTS AND GUARDIANS ASSOCIATION**

**CLIENT CONSULTATIVE COMMITTEES**

**ETHICS COMMITTEE**

**SERVICES DIVISION**  
**GENERAL MANAGER SERVICES**  
 Policy, Research and Ethics  
 Senior Professional Team  
 Community Grants  
 Client Information Services  
 Queensland Cerebral Palsy Register  
 Library Service  
 Volunteer Service

**HUMAN RESOURCES DIVISION**  
**GENERAL MANAGER HUMAN RESOURCES**  
 Employment related admin and record keeping  
 Employment Policy Development  
 Legislation Monitoring and Compliance  
 Employee and Industrial Relations  
 Employee Resourcing  
 Training and Development  
 Workplace Health and Safety

**COMMERCIAL DIVISION**  
**GENERAL MANAGER COMMERCIAL DIVISION**  
 Access Employment Services  
 Adept Packaging  
 ETS Mobility  
 Printabout  
 Capability Queensland  
 CPLQ Labrador Holiday Units

**MARKETING AND BUSINESS DEVELOPMENT DIVISION**  
**GENERAL MANAGER MARKETING AND BUSINESS DEVELOPMENT**  
**Marketing Services**  
 Marketing Strategy  
 Brand Positioning and Direction  
 Public Relations  
 Digital Marketing  
 Publications  
 Direct Marketing  
 Commercial & Services Marketing

**Business Development Programs**  
 Bequests  
 Corporate Partnerships  
 Capital Appeals  
 Call Centre  
 Donor Relations  
 Events and Sponsorships

**CORPORATE SERVICES DIVISION**  
**GENERAL MANAGER CORPORATE SERVICES**  
 Finance  
 Purchasing  
 Property  
 Pay Office  
 Legal  
 Computing

**TECHNOLOGY SUPPORT SERVICES**  
**Regional Office:**  
 Geebung  
**Communication Board Service**  
**Technology Unit**  
**Walkways Mobility Program**

**CHILD & FAMILY SUPPORT SERVICES - SOUTH EAST QLD**  
**Regional Offices:**  
 Chermside  
 Gold Coast  
 Ipswich  
 Mt Gravatt  
 Sunshine Coast  
**Early Childhood Service**  
**School Aged Service**  
**In Home and Community Access**  
**Equipment Library**

**ADULT SERVICES SOUTH**  
**Regional Office:**  
 New Farm  
**Adult Day and Community Access Services**  
 Capalaba  
 Gold Coast  
 Moorooka  
 Springfield  
**Adult Accommodation Services**  
 Browns Plains  
 Gold Coast  
 Moorooka  
 Mobile On-Call Service  
**Employment Support Services**  
 Rocklea  
 Tingalpa  
**Adult Therapy, Social Work & Psychology**  
**Transport Department**

**ADULT SERVICES NORTH**  
**Regional Office:**  
 Bowen Hills  
**Adult Day and Community Access Services**  
 Ashgrove  
 Fig Tree Pocket  
 Redcliffe  
**Adult Accommodation Services**  
 Inner North (Alderley office)  
 Outer North (Alderley office)  
 Fig Tree Pocket  
 Sunshine Coast  
**Employment Support Services**  
 Brisbane CBD  
 Strathpine  
**Adult Therapy, Social Work & Psychology**  
**Equipment Library**

**WIDE BAY, CENTRAL & NORTH QUEENSLAND**  
**Regional Offices:**  
 Hervey Bay  
 Rockhampton  
 Townsville  
**Child and Family Support Services**  
 Bundaberg  
 Gladstone  
 Hervey Bay  
 Maryborough  
 Rockhampton  
 Townsville  
 Regional Outreach  
**In Home and Community Support**  
 Bundaberg  
 Gladstone  
 Hervey Bay  
 Maryborough  
 Rockhampton  
**Adult Day and Community Access Services**  
 Gladstone  
 Hervey Bay  
 Maryborough  
 Rockhampton  
**Adult Accommodation Services**  
 Gladstone  
 Hervey Bay  
 Maryborough  
 Rockhampton  
**Adult Therapy and Social Work**  
**Information Services**  
 Townsville  
**Equipment Library**

**SOUTH QUEENSLAND COUNTRY**  
**Regional Office:**  
 Toowoomba  
**Child and Family Support Services**  
 Toowoomba  
 Regional Outreach  
**In Home and Community Support**  
 Toowoomba  
 Regional Outreach  
**Adult Day and Community Access Services**  
 Toowoomba  
**Adult Accommodation Services**  
 Toowoomba  
**Social Work Service - Children and Adults**  
**Equipment Library**